

THE *Bethel* ROBE

Sewing Pattern

SIZES FROM EXTRA PETITE
TO EXTRA LARGE

Job's Daughters Bethel Robe

Body Measurements Chart (inches)

Size	XP	P	S	M	L	XL
Chest/Upper Bust Circumference	71	76	83	91	99	106

Fabric Required (Yards)

Size	XP	P	S	M	L	XL
60" wide fabric	4	4 1/2	4 1/2	4 1/2	4 3/4	4 3/4

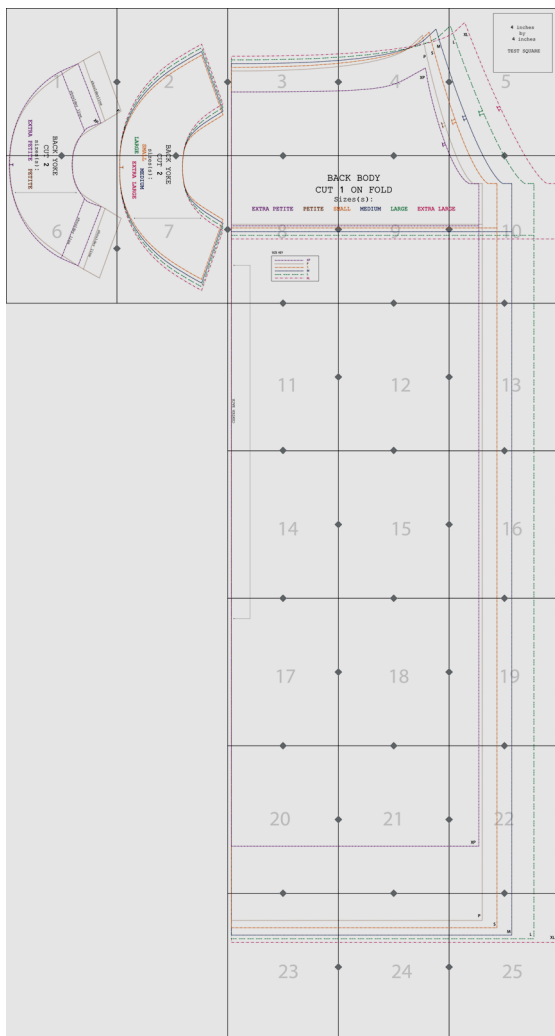
Approximate finished garment dimensions (inches)

Size	XP	P	S	M	L	XL
Length from HPS to unhemmed sweep	54.7	62.8	63.6	64.3	69.3	73.3
Sleeve overarm length	18.5	21.0	22.0	23.0	24.0	25.0
Sleeve underarm length	22.9	24.4	25.2	26.0	27.4	28.8
Robe sweep	65.6	65.5	69.5	73.5	79.5	85.5
Yoke width	3.0	3.0	3.0	3.0	3.0	3.0

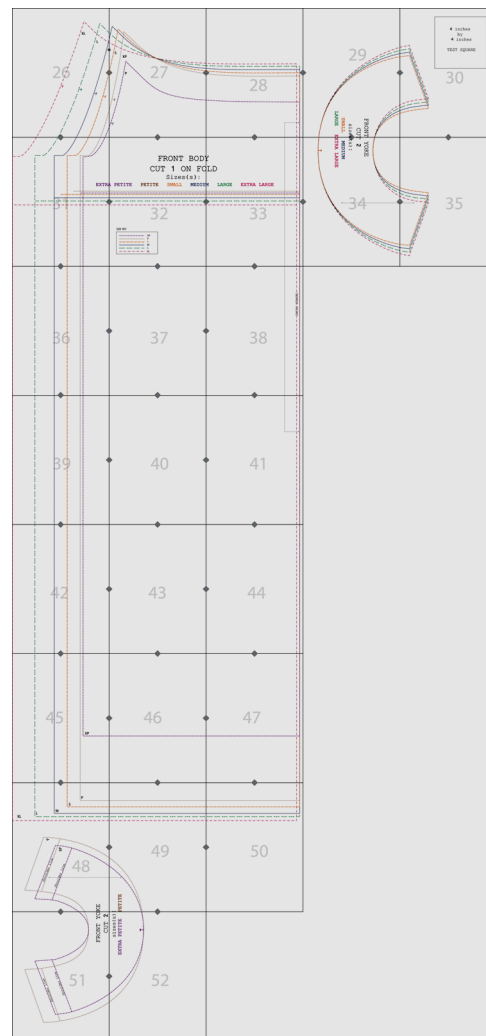
* HPS is highest point of shoulder of the robe

Print & Assemble the Pattern Tiles

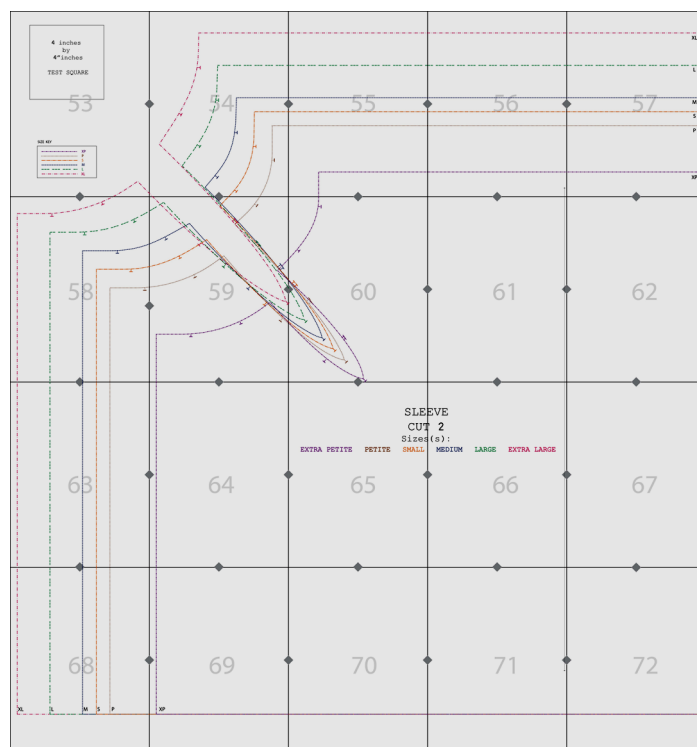
1. Print the file in size **letter or A4**. Before you start printing remember to select **100% or "Actual Size"** as scale of the page, otherwise pattern will be altered. You can check the right scale with the 4" by 4" inches Test Square on the pattern.
2. Trim with scissors the right edge and the lower edge along the continuous line, so that the arrowheads are aligned with the edge, and join the pieces with adhesive tape matching diamonds. For convenience in pulling the sheets, do not cut the left and upper edges, so that one side has a margin of support.
3. Join all pages following numerical order as shown in the images on next page. Be sure that the diamonds match up in each side as well as the lines of the patterns.
4. The robe pattern has been split into three tiled components
 - **Tiling A** - numbered 1-25, contains the back body and back yoke
 - **Tiling B** - numbered 26-52, contains the front body and front yoke
 - **Tiling C** - numbered 53-72, contains the sleeves pattern
5. The pattern is layered so that the user may print only the size(s) required.



TILING A

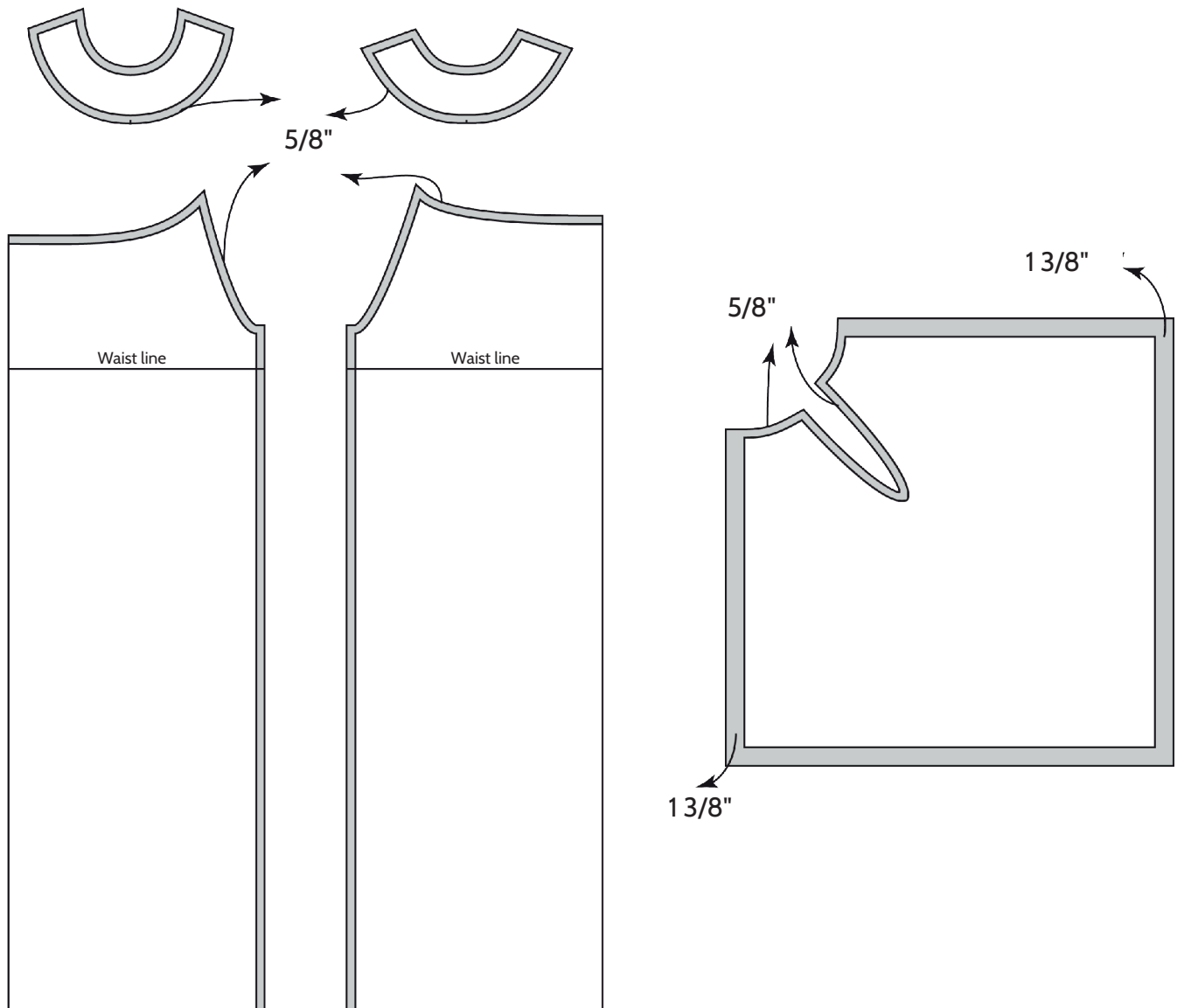


TILING B



TILING C

Seam Allowances



The pattern is inclusive of seam allowances.

The grey areas indicate where and how much seam allowance has been allowed.

The sweep hem is not set, the sweep is to be hemmed as required.

Sewing Directions

5/8" seam allowance.

Cut out 2 of each yoke pattern, one set for the yoke and one for the lining.

Stitch front yoke to back yoke at shoulder seams, press open. Stitch together the other front and back for the yoke lining. Place the two yokes, right sides together and pin around the neck edge. Stitch the yokes together another the neck opening. Trim seam and understitch the neck opening. Turn to right side and press. Baste the two lower edges together, set aside.

The fun part - the sleeves:

The narrow U cut out is the edge that gets sewn into the body of the robe. The long straight edges on either side of the U end up being the top of the sleeve. Before anything else, the edges of the sleeve are hemmed. Press up 1 3/8" hem on all four sides. Then turn under the raw edge 1/4 inch. The three corners are mitered to make a neat corner. (I've seen them not mitered and it really makes a big difference in appearance of the robe.) Once all three corners are mitered, stitch the hem of the sleeves by topstitching a 1" hem around each side. Do the other sleeve just the same.

Stitch body front to body back at side seams, serge or zig-zag edge and press. You can now see where the sleeve "U" is sewn into the robe body. Pin, stitch, serge. I also recommend reinforcing the bottom of the "U" with additional stitching.

The sleeve is formed by bringing the two shorter hemmed sides together. Here if the length of the two sides don't match up exactly, I match up the hem then trim off any excess at the top of the sleeve. It is important to overlap the FRONT edge of the sleeve over the BACK edge. Overlap just the width of the hem. Pin and baste at the upper edge. Then stitch edges down 6 5/8" next to the folded edge (so when the sleeve is attached to the yoke the sleeve is stitched down 6". Now that you've mastered that sleeve, do the other one!

Now that you have a wide robe that needs to be gathered at the top edge in order to attach to the yoke. Gather the front and the back between the notches on the sleeve edges. Pin the yoke to the gown and stitch the yoke. Trim slightly and finish the edge.

Congratulations! You have made a robe!! Now sew on the cord.

Sewing Directions for Petite and Extra-Petite yokes

I designed these yokes to open at the shoulder so the yoke can be better sized to the smallest Jobies while still being able to get the robe on over the head. (Sometimes you need a larger neck opening just to get the robe over the head, this solves the problem.)

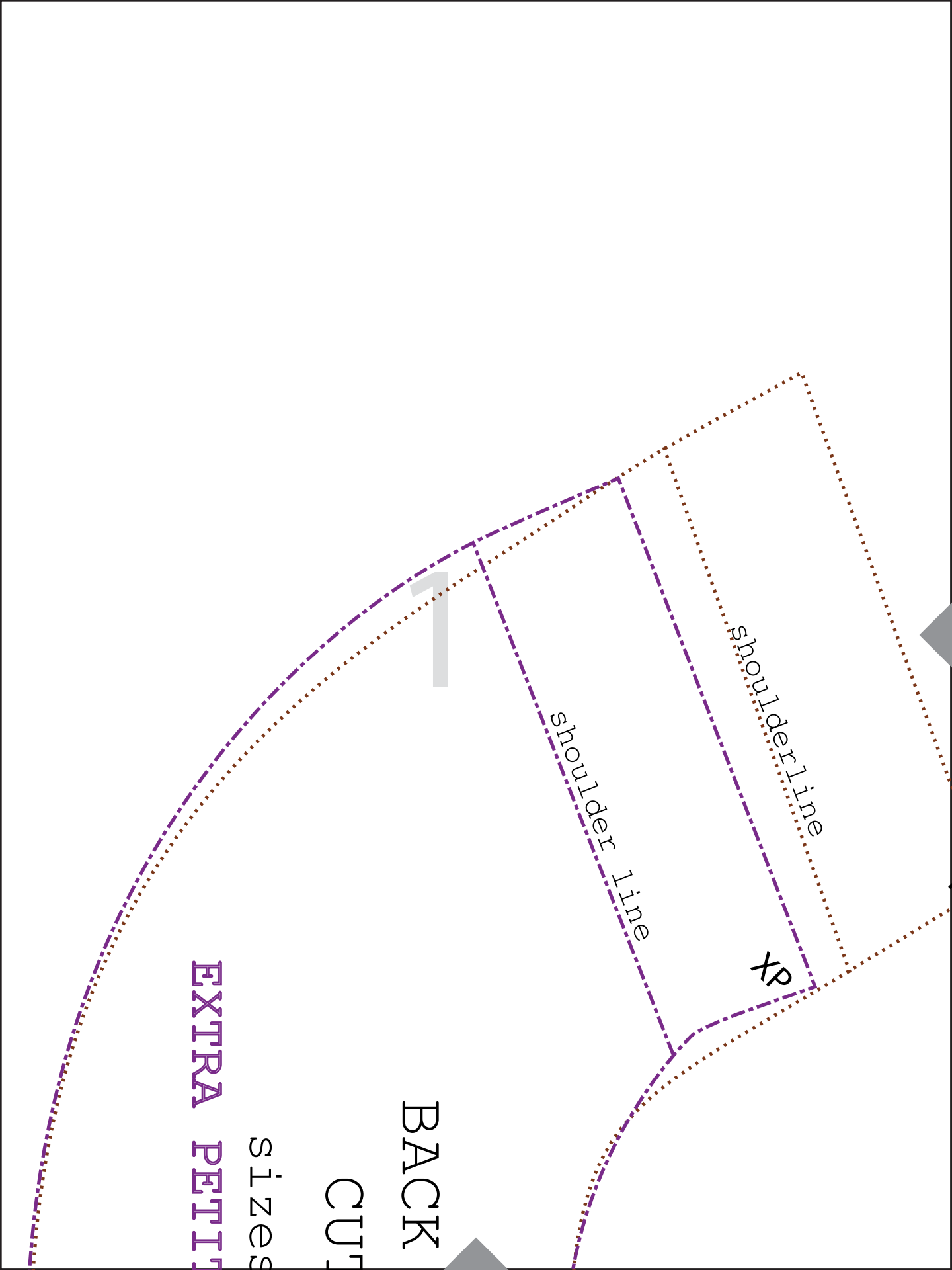
Cut the two front yokes and two back yokes. I have added an extension on each shoulder seam so they can overlap with a Velcro closure. Sew two front pieces together across the shoulder, down around the neck opening and across the other shoulder using a 5/8" seam. Trim and under stitch as much of the neck edge as you can. Baste the raw edge closed. Do the same for the back yoke.

On the lining side of the front yoke attach a piece of 1" wide Velcro at the shoulder. Length of the Velcro, approximately 2" long, so that it reaches the neck edge of the yoke, but does not extend into the outer seam allowance. Sew Velcro on both shoulders.

On the **right** side of the back yoke attach the other side of the Velcro at the shoulder again not allowing the Velcro to go into the outer seam allowance.

Stick the Velcro together matching the shoulder notch and then baste the yokes together at the outer edge.

Continue to sew the robe like any other robe, just smaller and therefore cuter!



shoulder line

shoulder line

Xp

1

BACK

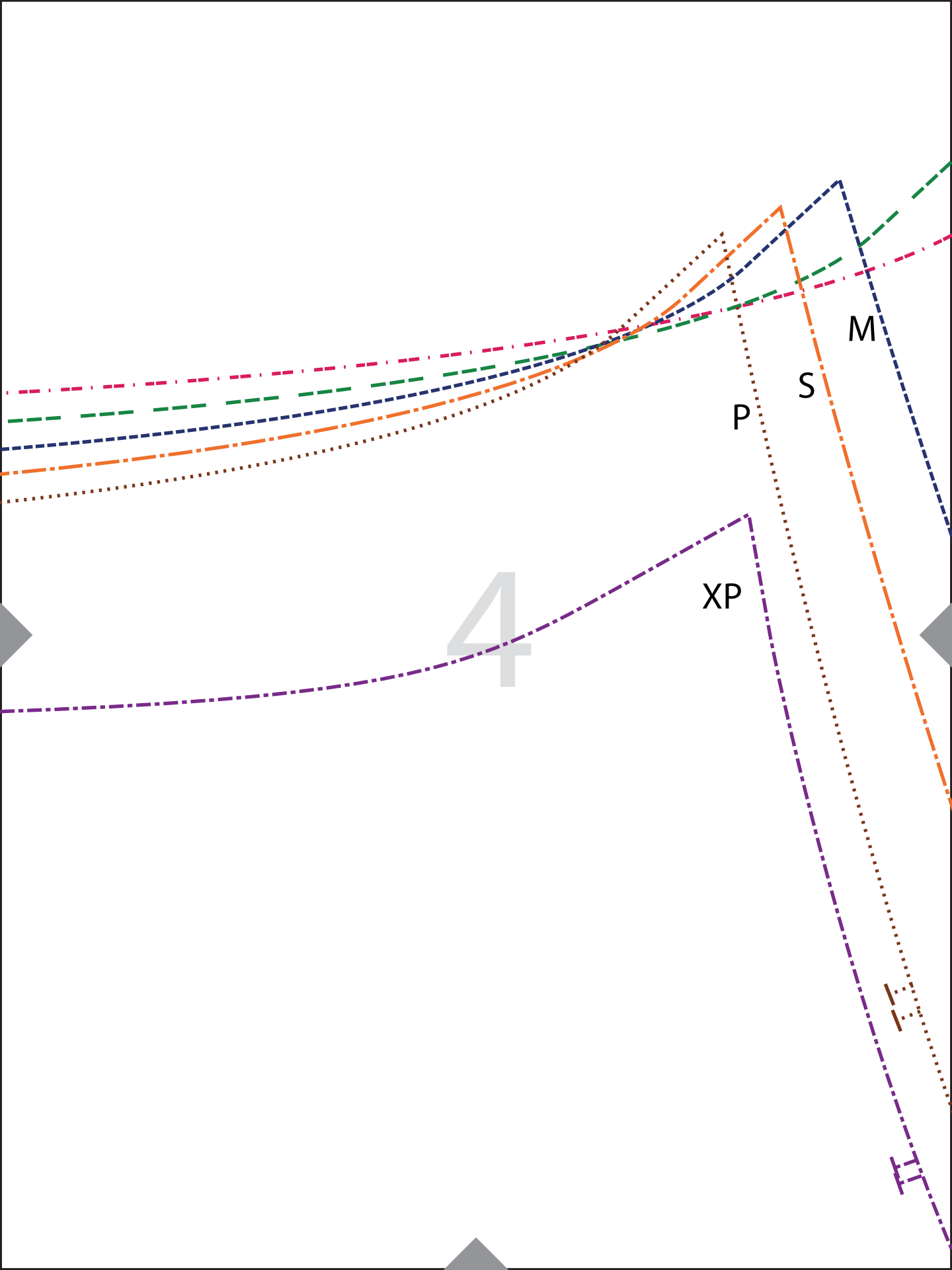
CUT

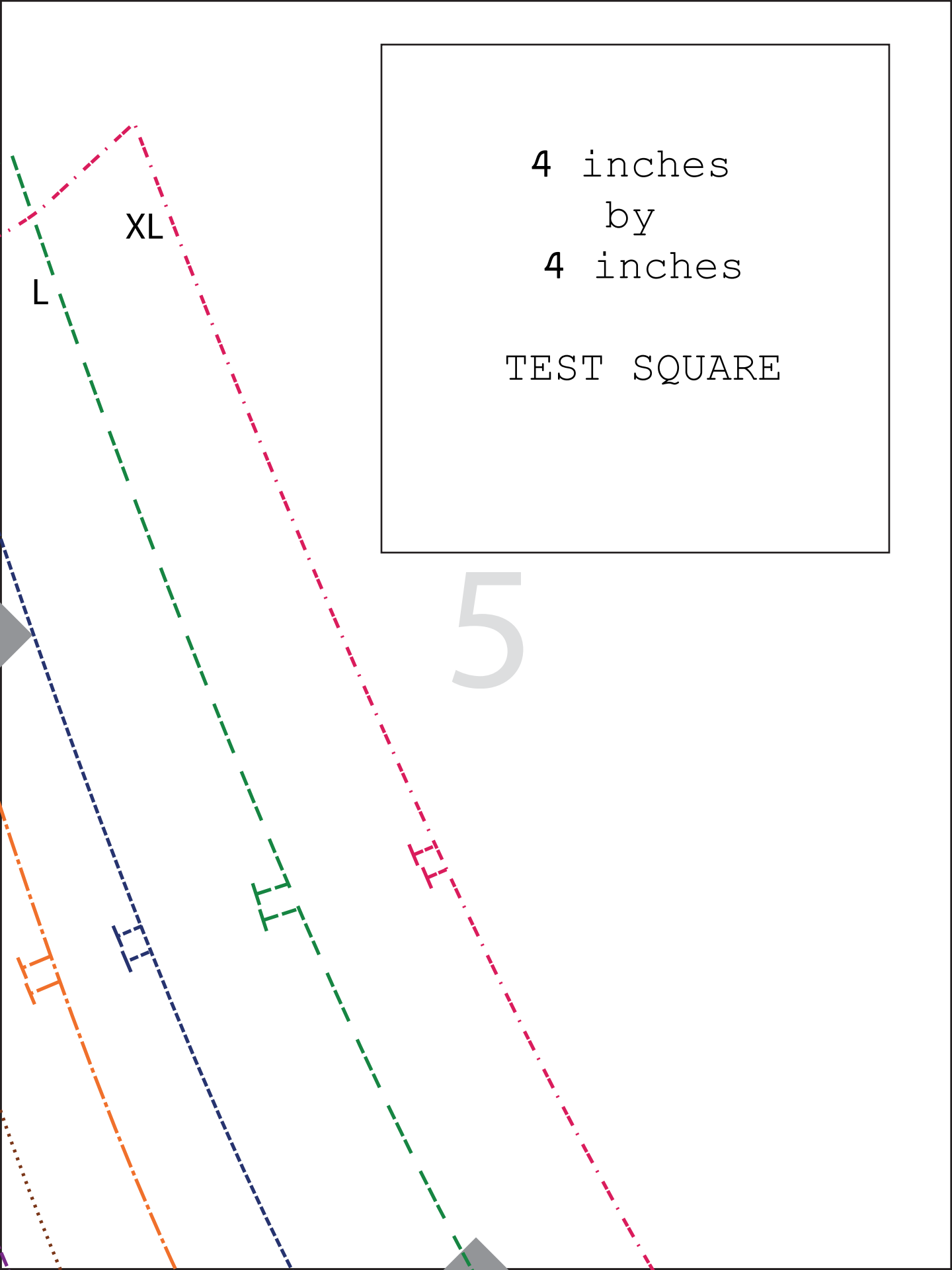
sizes

EXTRA PETT



3





4 inches
by
4 inches

TEST SQUARE

5

XL

L

YOKE

2

$s(s)$:

PETITE

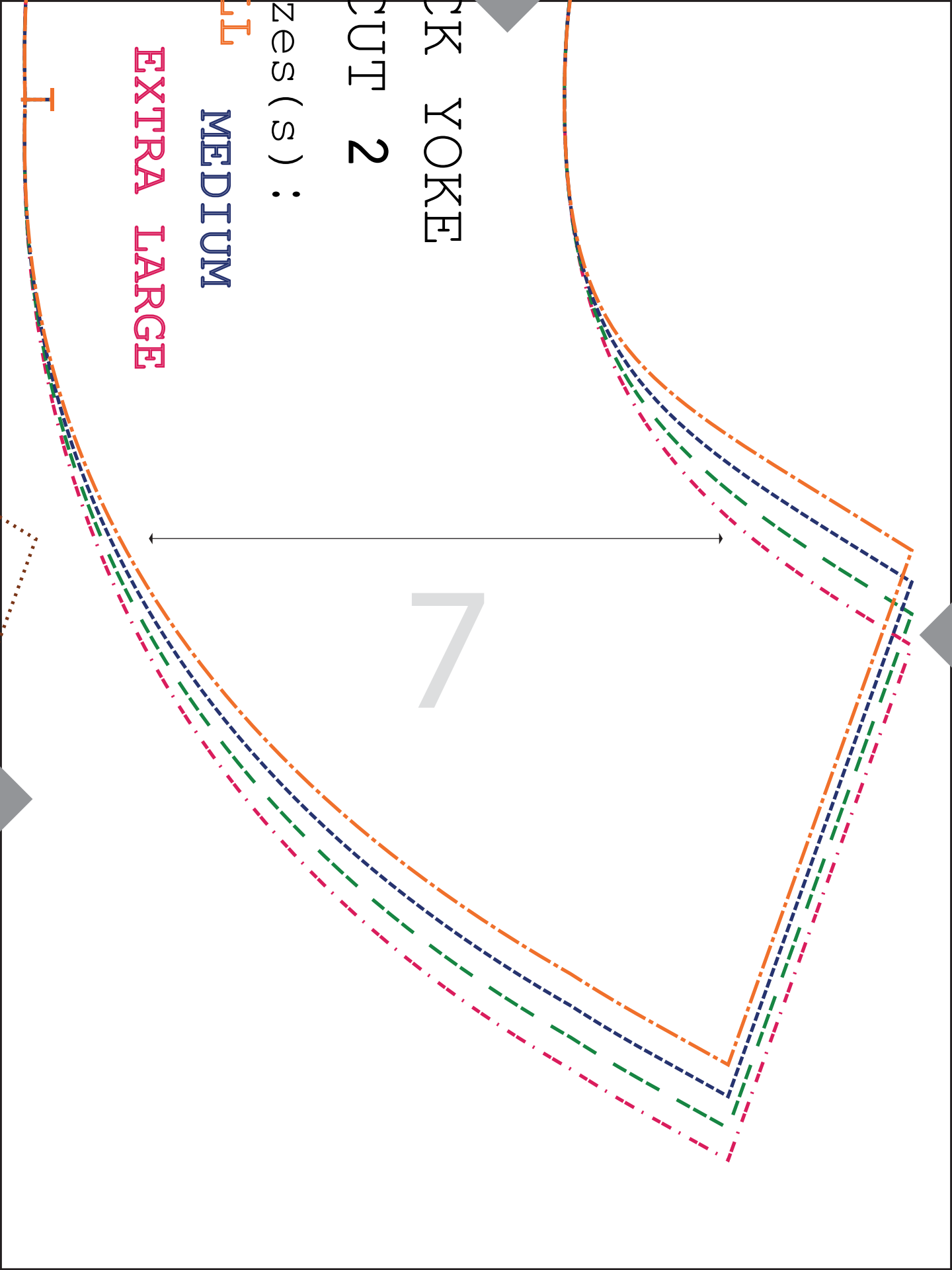
I

shoulder line

shoulder line

9





BA

CUT

S







EXTRA PETITE

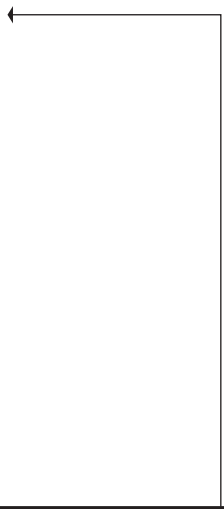
PETITE

SM

8

SIZE KEY

	XP
	P
	S
	M
	L
	XL



CK BODY

1 ON FOLD

izes(s) :

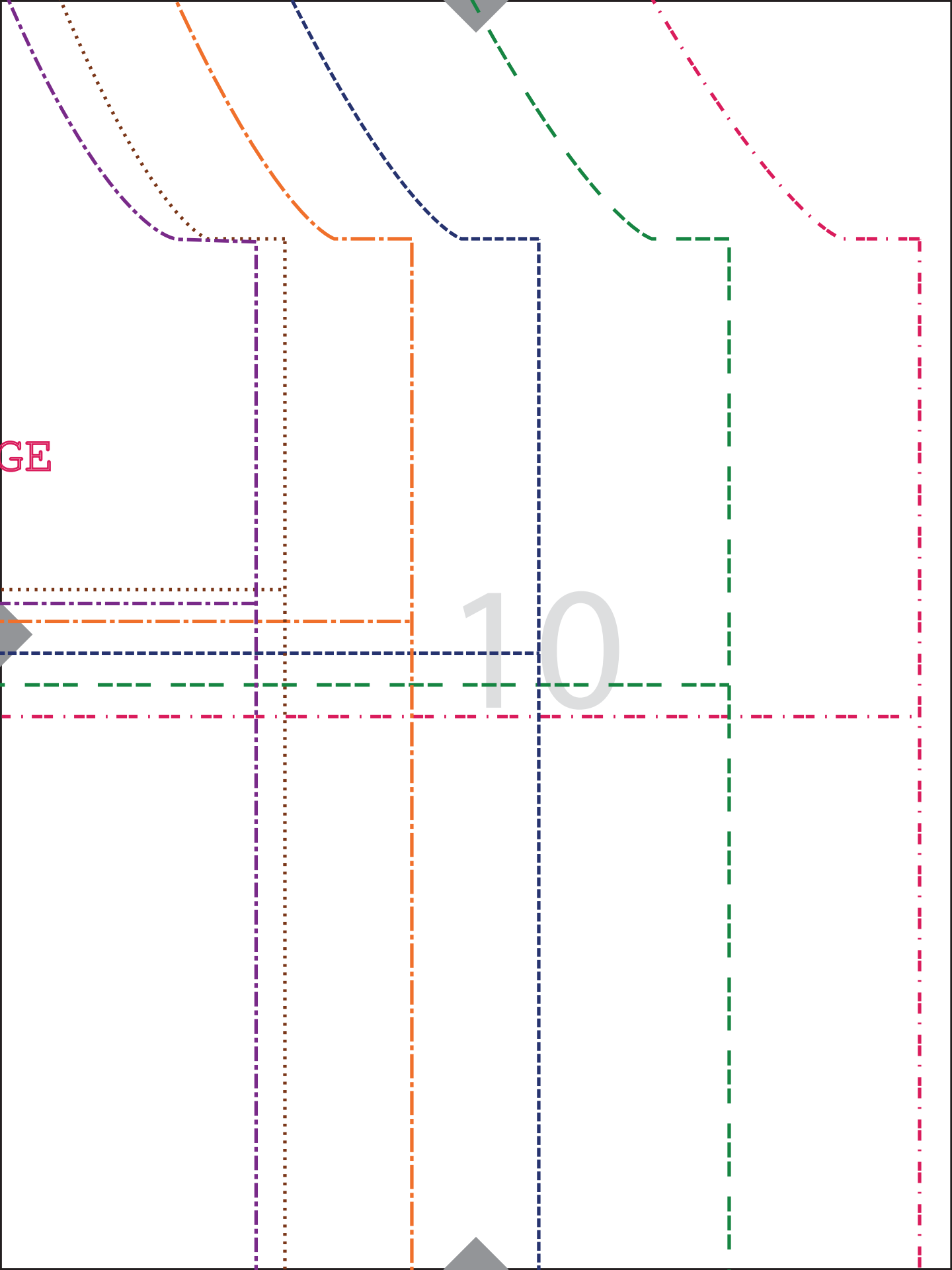
SMALL

MEDIUM

LARGE

EXTRA LARGE





GE

10

CENTER BACK

11

12



13

The page features a light gray background with several vertical lines of different colors and styles: a purple dotted line, a brown dotted line, an orange dash-dot line, a blue dashed line, a green dashed line, and a red dash-dot line. There are also gray triangles pointing right at the top and bottom centers, and a gray triangle pointing left on the left edge.

14

15

16

17

18

The page features a series of vertical lines in purple, brown, orange, blue, green, and red, each with a unique dash pattern. Triangular shapes are positioned at the top and bottom center, and on the left edge. A large, light gray number '19' is centered on the page.

19

20

21

22

XP

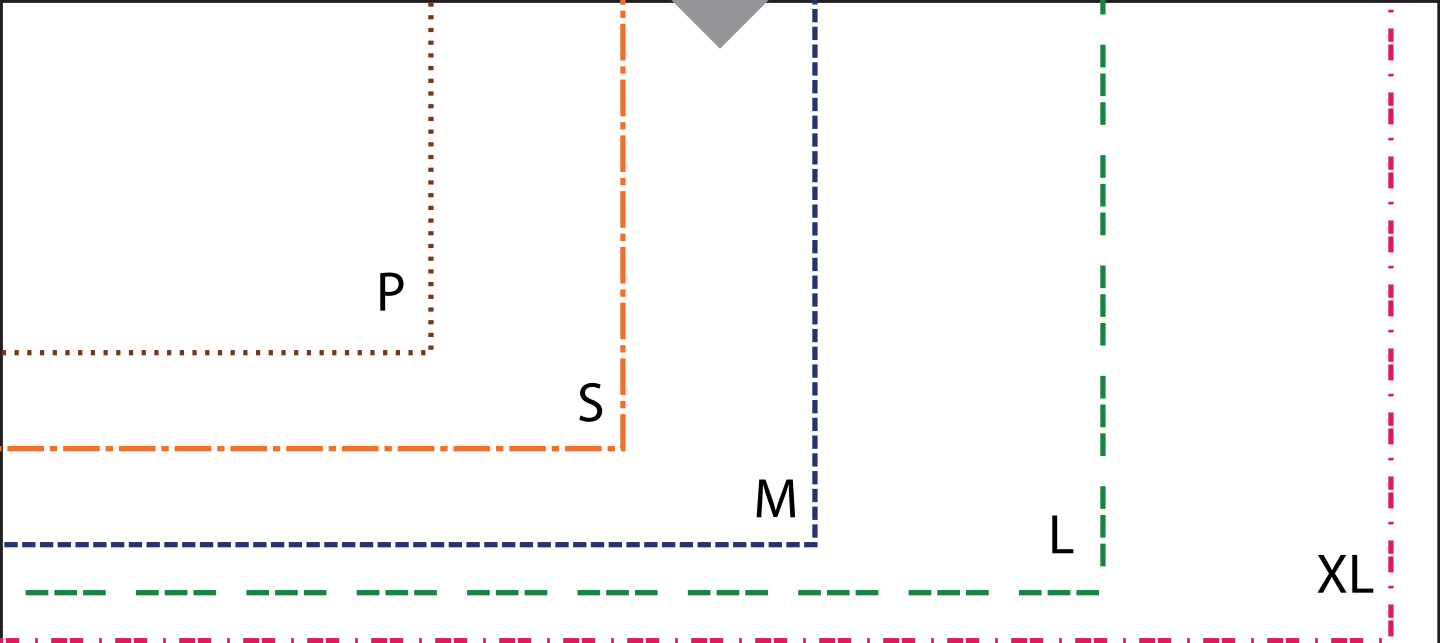


23



The page features five horizontal lines near the top: a dotted brown line, a dash-dot orange line, a dashed blue line, a dashed green line, and a dash-dot-dot magenta line. There are also four grey corner tabs: one at the top center pointing down, and three on the left and right sides pointing inward.

24



25

26

XL

L

M

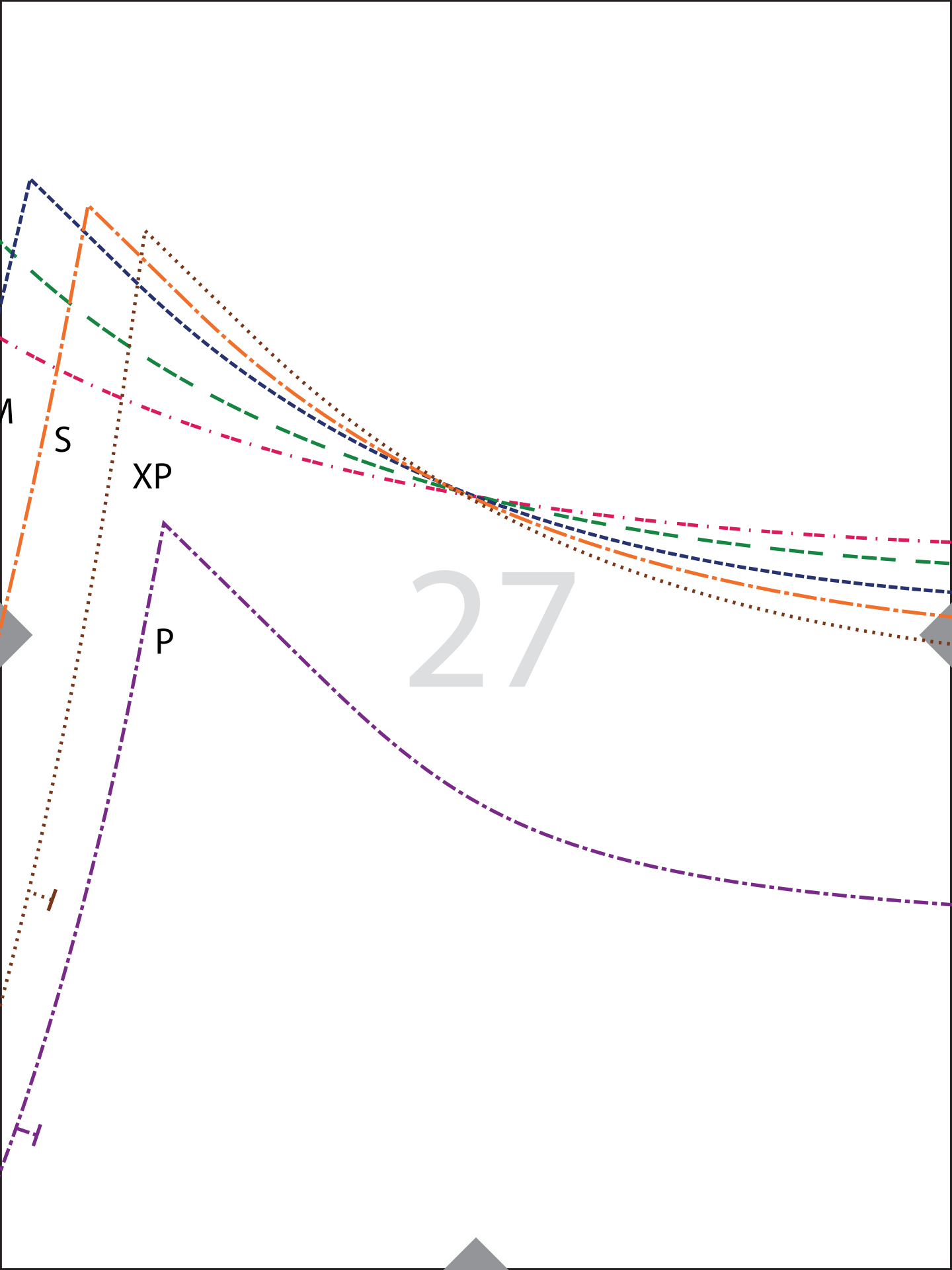


H

H

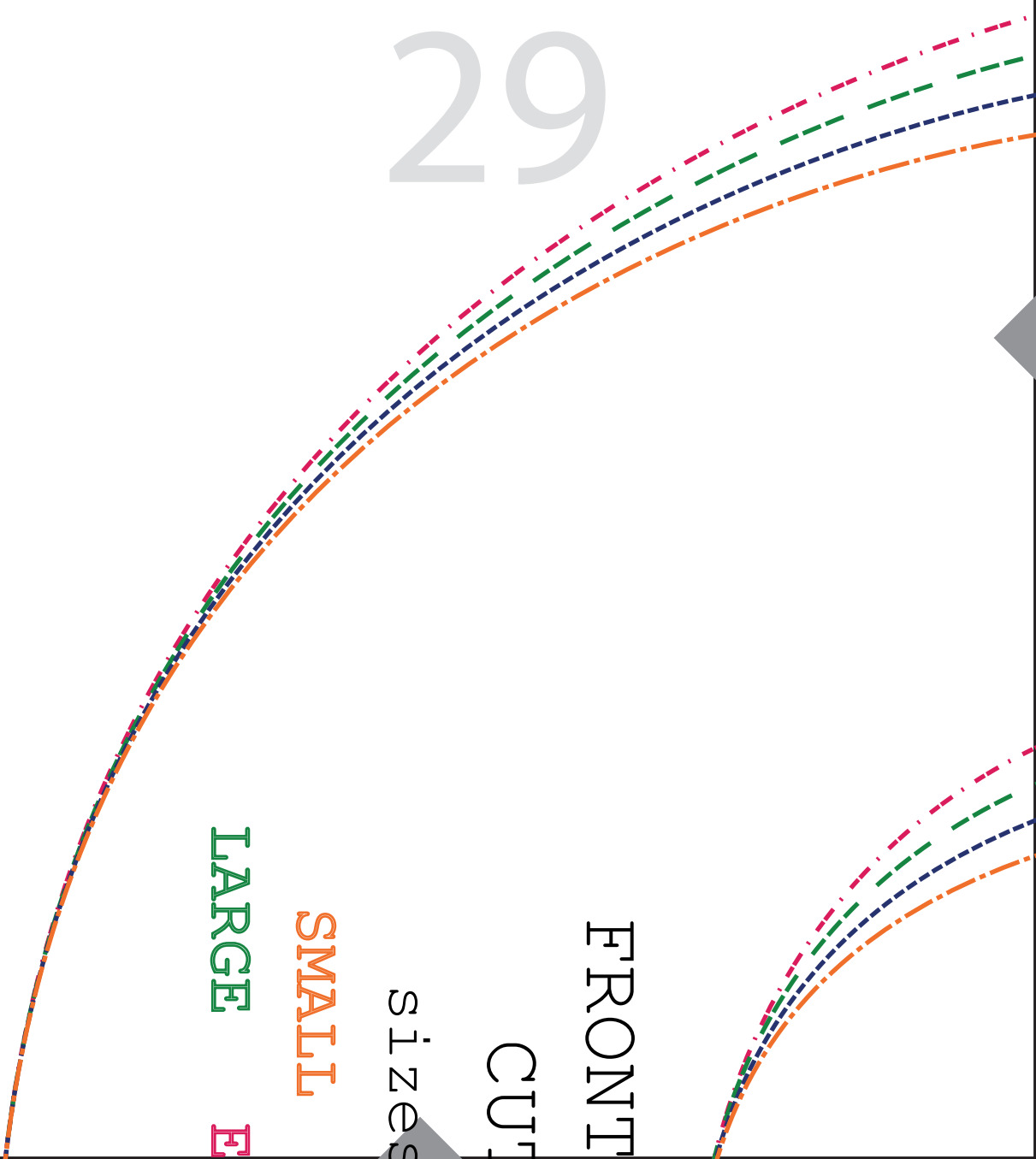
H

H



28

29



LARGE

SMALL

sizes

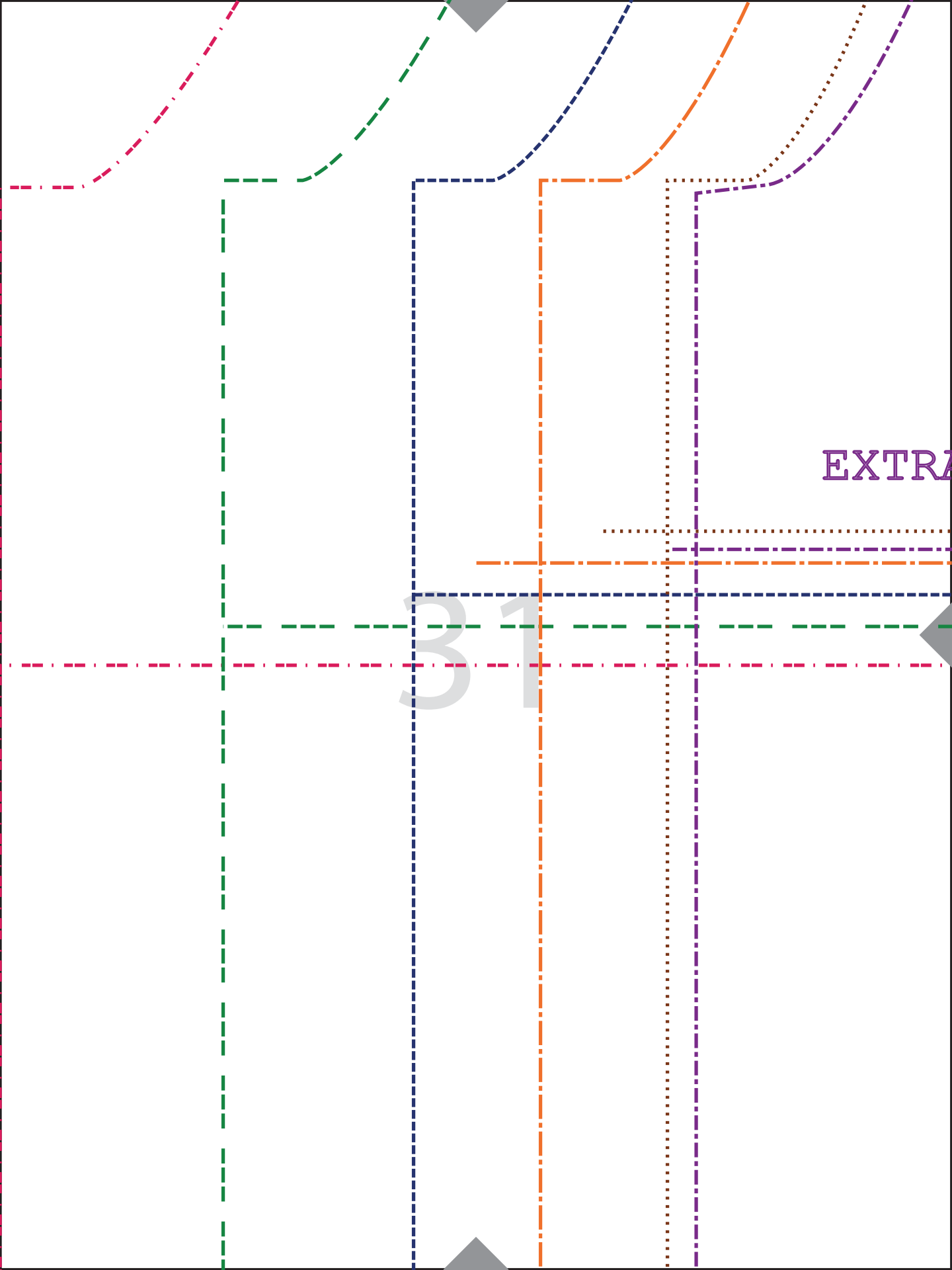
CUT

FRONT

4 inches
by
4 inches

TEST SQUARE

30



EXTRA

31

FRONT BODY

CUT 1 ON FO

Sizes(s) :

A PETITE







PETITE

SMALL

MEDIUM

32

SIZE KEY

	XP
	P
	S
	M
	L
	XL

Y
LD

M

LARGE

EXTRA LARGE

33

YOKE

2

$s(s)$:

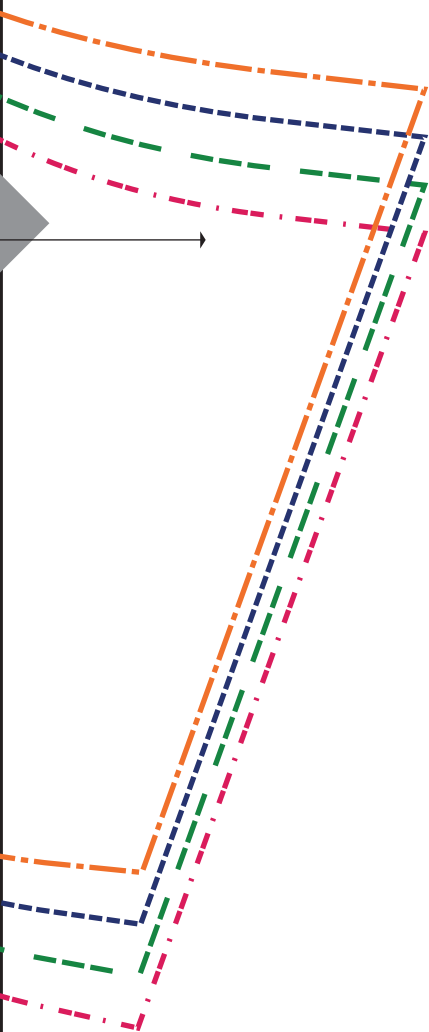
MEDIUM

XTRA LARGE

T

34

35



36

37

38

39

40

41

42

43

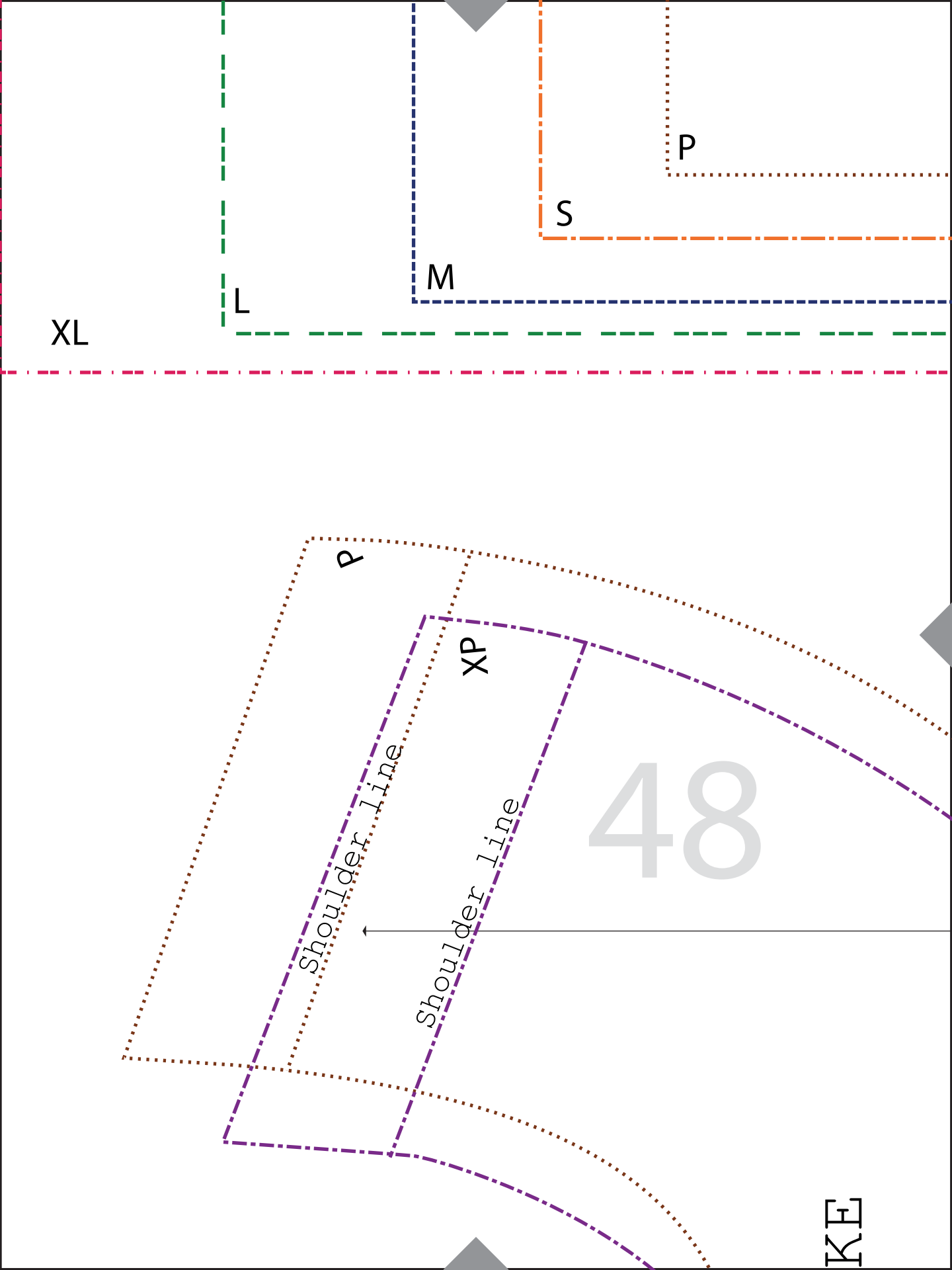
44

45

XP

46

47



49

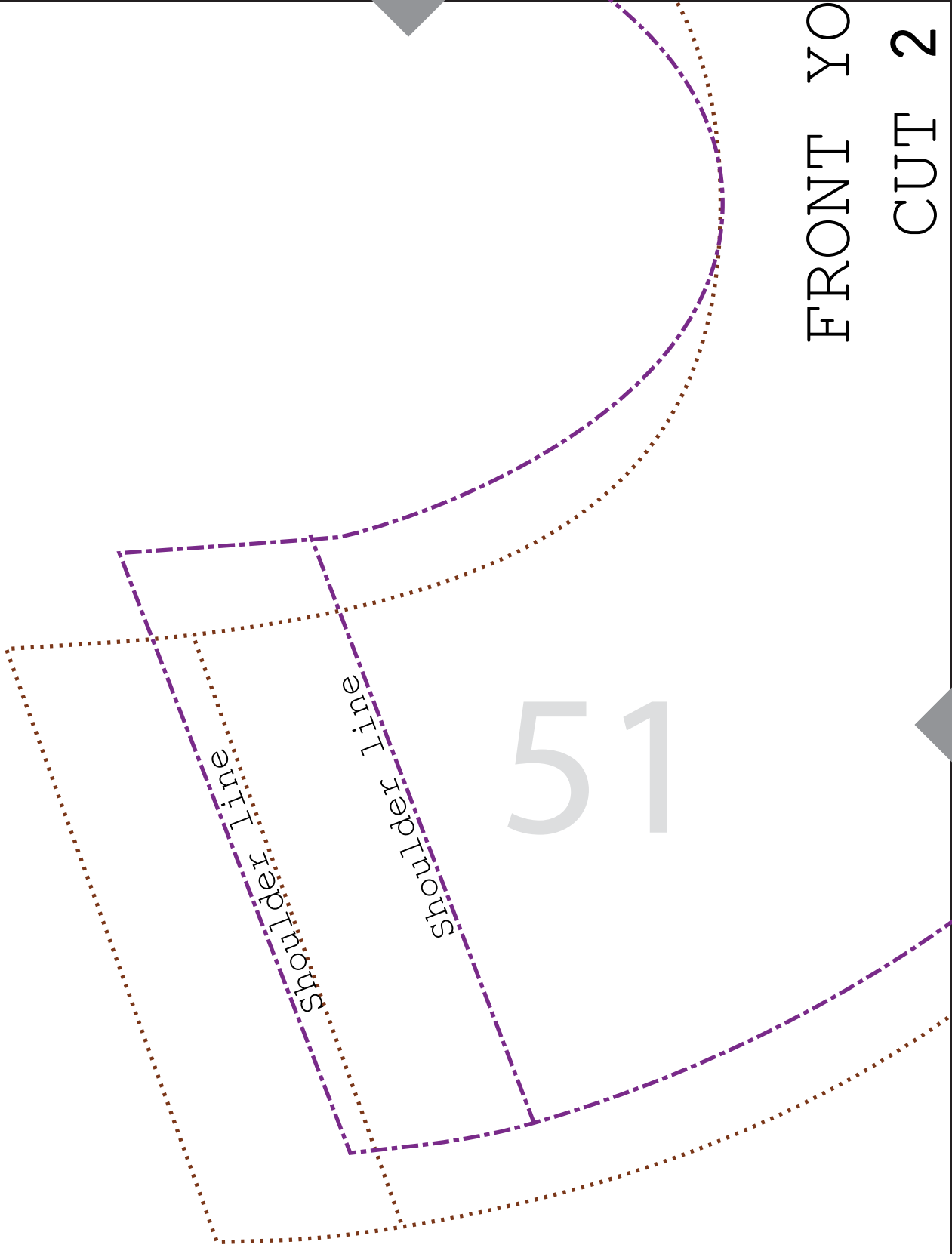
PETITE



50

FRONT YO
CUT 2

51



sizes (s)

EXTRA PETITE

I







52

4 inches
by
4 inches

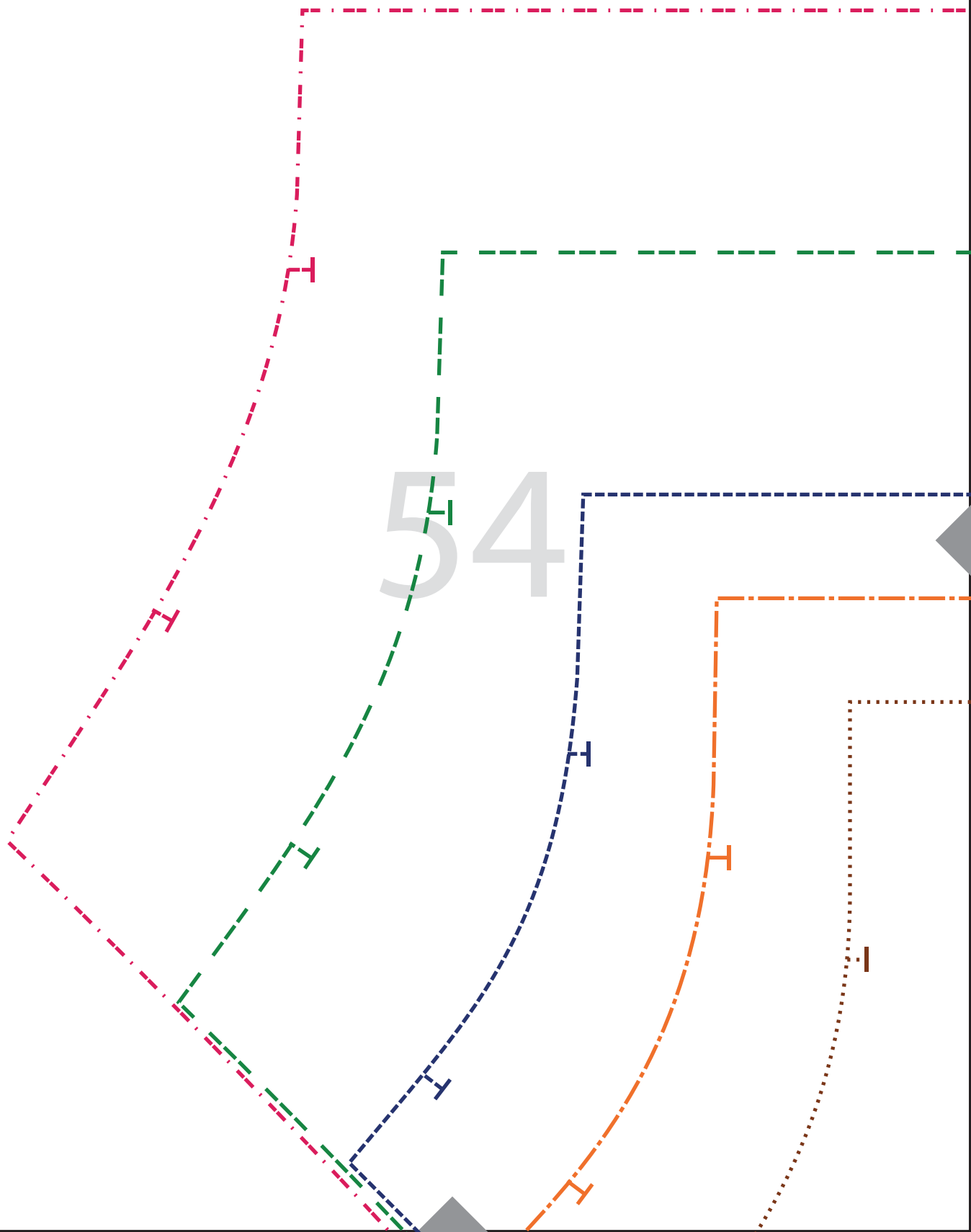
TEST SQUARE

53

SIZE KEY

	XP
	P
	S
	M
	L
	XL

54



55

56

XL

L

M

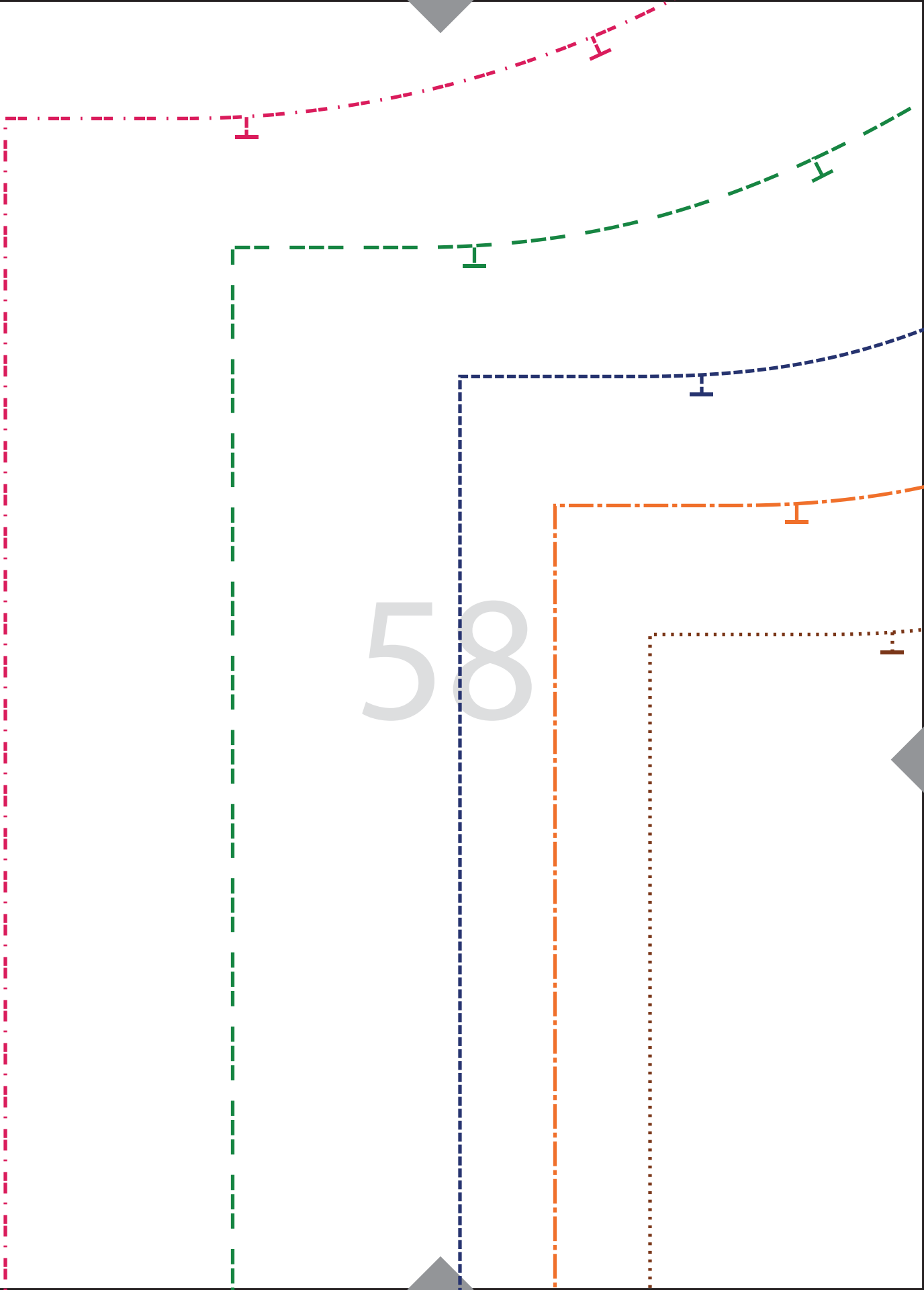
S

P

XP

57

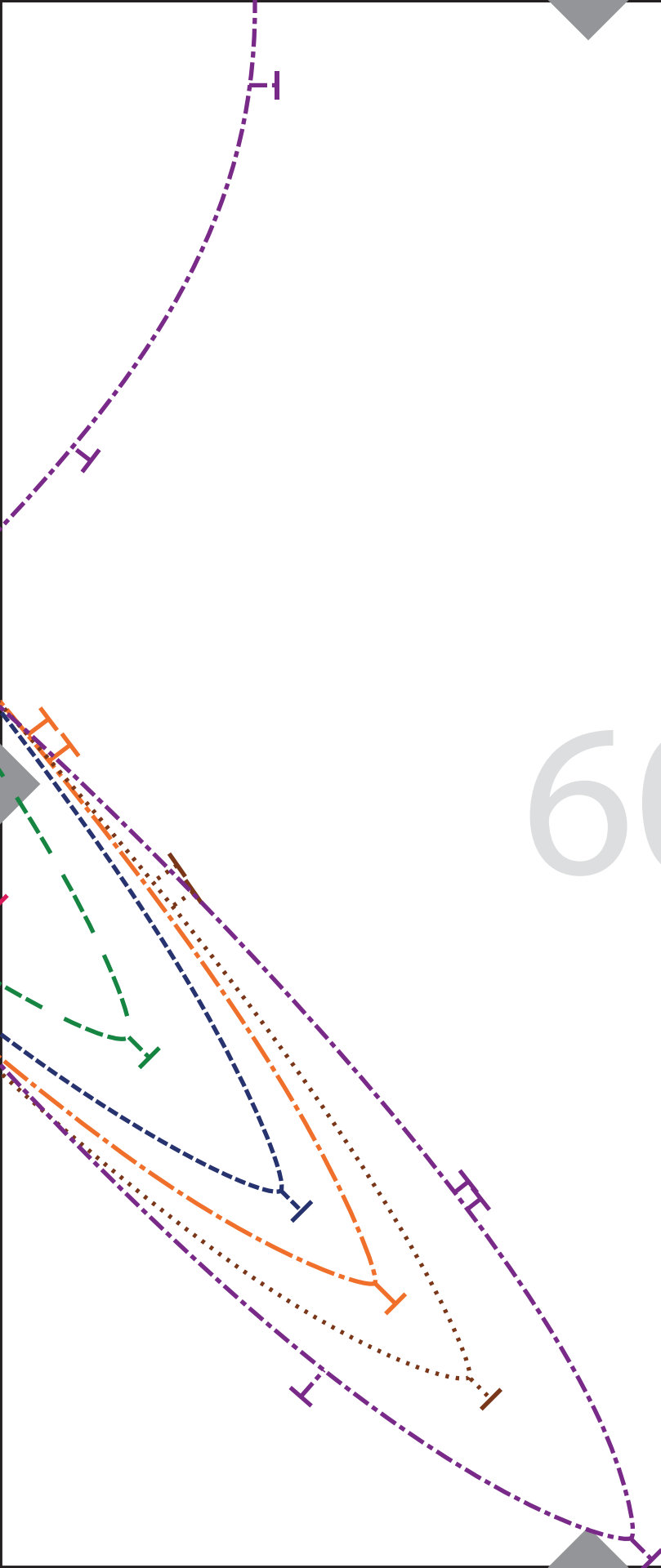
58



An abstract geometric pattern featuring several overlapping lines and shapes. The lines are in various colors (blue, orange, green, purple, brown) and styles (dashed, dotted, dash-dot). Some lines have small perpendicular tick marks. The shapes include triangles and rectangles, some of which are solid gray and others are outlined. The overall composition is dynamic and layered.

59

60



61

62

63

64

SLEEVE
CUT
Sizes

EXTRA PETITE

PETITE

SMALL

65

EVE

2

(s) :

MEDIUM

LARGE

EXTRA LARGE

66

67

68

XL

L

M

S

P

69

XP

70

71



72