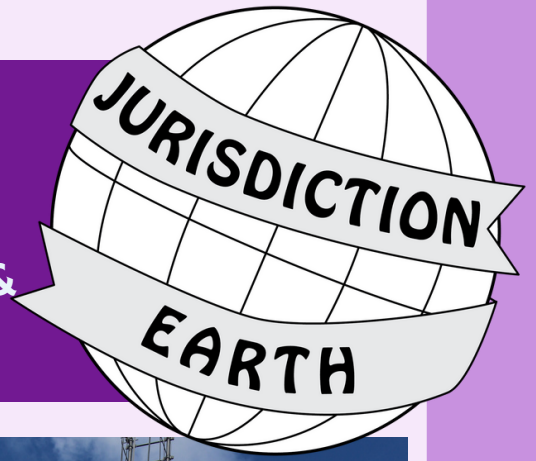


# JURISDICTION EARTH

A NEWSLETTER FOR JDI MEMBERS, ALUMNI, & FRIENDS. EVERYONE. EVERYWHERE.



## CONTENTS OF THIS ISSUE:

- GET TO KNOW THE 2022-2023 SUPREME GUARDIAN
- GET TO KNOW THE 2022-2023 ASSOCIATE SUPREME GUARDIAN
- GET TO KNOW THE 2022-2023 MISS INTERNATIONAL JOB'S DAUGHTER
- GET TO KNOW THE 2022-2023 SUPREME BETHEL HONORED QUEEN
- GET TO KNOW YOUR JURISDICTION EARTH EDITORS
- 2022-2023 CALENDAR OF SUPREME EVENTS
- TRANSLATION STATION
- TOWN HALL TALK



## GET TO KNOW THE 2022-2023 SUPREME GUARDIAN, MAUREEN WISE.

Installed as the Supreme Guardian at the 2022 Supreme Session in Port Huron, Michigan, USA; we interviewed Maureen to give you all a glimpse of our beloved Order's adult leader.

*What year did you first become involved with Job's Daughters?*

1957 when she was initiated into Bethel #46 in Harvey, Illinois just one month after her 12th birthday.

Continued on page 2

MOM WISE AND DAD ROB ARE ASKING ALL THE GIRLS TO BE A "WISE OWL" THIS YEAR.

BE A . . .  
WARM  
INSPIRING  
SINCERE  
ENTHUSIASTIC

OUTSTANDING  
WOMAN  
LEADER





But how did she even find out about Job's Daughters? Family ties. Maureen's grandfather was a Master Mason raised in Scotland. He moved to the USA when the Chicago World's Fair was being planned and was offered a job as a metal worker. He got married to her grandmother, who joined Eastern Star. Maureen's mother is a twin and they would have loved to join Job's Daughters, but that was during The Great Depression in the USA and they were unable to afford for them to join. As adults they joined Eastern Star too.

The lodge where Maureen's grandfather & father were members had a Bethel; and a close family friend was a Charter Member. With her encouragement, she joined Bethel 46 with her parents by her side at the age of 12.

*What's your favorite station in Job's Daughters?* Chaplain

*What is your term information?* The color is royal blue. Her mascot is an owl perched atop an anchor. Her motto is: To be fair is to do good. Her watchwords are: Guide Us, Teach Us, Love Us.

*If it were up to you, where would you love to see Job's Daughters expand to next?* Somewhere on the east coast of the United States. There are several inquiries about getting Bethels started within some east coast states. She thinks the potential for growth could be achieved sooner than a foreign expansion and be very beneficial for the Order. That being said, expansion to other countries is important and there is hope to expand JDI in some other countries, however it requires a lot of planning and money to make sure that it is a successful endeavor.

*What game(s) do you and your family play the most often?* Cribbage and board games.

Continued on page 3

**JURISDICTION  
EARTH**



**DO YOU LIVE ON THE EAST COAST OF THE  
UNITED STATES WHERE THERE ARE NO BETHELS?  
LET'S CONNECT:  
JURISDICTIONEARTHEDITOR@GMAIL.COM**



*One fun, unique fact about yourself:* “My mother-in-law was the person who introduced me to her son, who became my husband! She is also a Past Grand Guardian of Wisconsin, USA.”

### GET TO KNOW THE 2022-2023 ASSOCIATION SUPREME GUARDIAN, ROB WORTHINGTON

Installed as the Associate Supreme Guardian at the 2022 Supreme Session in Port Huron, Michigan, USA; we interviewed Rob to give you all a glimpse of our Order's main Masonic supporter.

*The year you first became involved with Job's Daughters:* 2008. Rob and his family met some of the Bethel 42 Virginia Beach, Virginia, USA members at a Kempsville Lodge Saturday breakfast. He had recently returned from a military deployment and was scheduled to deploy again only a few months later. His daughters bonded very quickly with the Bethel members and he convinced his apprehensive daughter (Caitlin) to join. Her younger sisters, Erin and Brenna, became a part of the Jobie-to-bee hive there. For the next six years while Rob continued to serve in the military, his daughters had a second family to support them while he was away.

In 2012, he was selected as the Associate Bethel Guardian of Bethel 42; and in 2014 he retired from the military which meant a move after his youngest, Brenna, was initiated. He and his three daughters landed at Bethel 52 in Herndon, Virginia, USA. Rob said it best, “It was truly a life changing event that has become a centerpiece of our families' lives and in my humble opinion one thing that certainly helped my daughters become the women they are today.

*What is your favorite station in Job's Daughters?* Junior Princess - it's where one can see the changes in the Daughter herself, the understanding of the ritual, and the learning that they have during this term is substantial.

**JURISDICTION**  
**EARTH**



**DID JOB'S DAUGHTERS PROVIDE A SECOND  
FAMILY FOR YOU? LET'S CONNECT:**  
**JURISDICTIONEARTHEDITOR@GMAIL.COM**

## PAGE 4 - SEPTEMBER SPECIAL EDITION

*What is your term information?* The owl named Olivia Wiseworth is their emblem, promoting a motto of “in unity and harmony.” Colors are purple, white, and blue.

*If it were up to you, where would you love to see Job’s Daughters expand to next?* Taiwan, Sri Lanka and more countries in South America. Rob said these are all places where there are large numbers of girls seeking ways and places to grow – the very things that Job’s Daughter offers.

*What game(s) do you and your family play the most often?* Rob’s family like card games - especially Phase 10 because it requires a little bit of skill, a good bit of luck, and most of all a good sense of humor!

*One fun, unique fact about yourself:* His favorite song is “Africa” by the band Toto because it’s a great song with a story about people searching within themselves to discover the mysteries of life. However, his favorite kind of music is Reggae. “Everything from roots to dancehall, I can listen to reggae all day every day without changing the channel.”



**JURISDICTION  
EARTH**



**DID JOB'S DAUGHTERS PROVIDE A SECOND  
FAMILY FOR YOU? LET'S CONNECT:  
[JURISDICTIONEARTHEDITOR@GMAIL.COM](mailto:JURISDICTIONEARTHEDITOR@GMAIL.COM)**





### GET TO KNOW THE 2022-2023 MISS INTERNATIONAL JOB'S DAUGHTER, NATASHA

JE editor Rachel had the pleasure of helping judge the MIJD ritual competition (virtually) a few weeks before 2022 Supreme Session; and then also sitting next to Natasha at the 2022 Supreme Session Formal Banquet in Port Huron, Michigan, USA. She can confirm she's super sweet and will give this job her whole heart!

*What year did you first become involved in Job's Daughters?* Natasha first became involved with Job's Daughters in 2013, and joined on her 10th birthday.

*What's your favorite station in Job's Daughters?* Librarian. She loves to share her creative side with her Jobie sisters!

*What is your term information?* Carpe Diem "Seize the Day" which is represented by her emblem, the sun. Her colors are gold and white and her motto is "Live your life with no regrets."

*If it were up to you, where would you love to see Job's Daughters expand to next?* Mexico, so we can have Job's Daughters in all of North America.

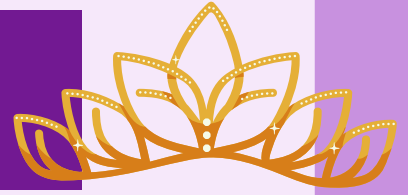
*What game(s) do you and your family play the most often?* Uno - she even carries a travel sized Uno with her.

*One fun, unique fact about yourself:* Natasha's family owns three dogs; all adopted from animal shelters.

**JURISDICTION  
EARTH**



**DID YOU JOIN ON YOUR BIRTHDAY? TELL US  
YOUR UNIQUE STORY ABOUT YOUR INITIATION  
AT [JURISDICTIONEARTHEDITOR@GMAIL.COM](mailto:JURISDICTIONEARTHEDITOR@GMAIL.COM)**



### GET TO KNOW THE 2022-2023 SUPREME BETHEL HONORED QUEEN, LETÍCIA

History was made at the 2022 Supreme Session when, for the first time, at the Supreme Bethel Meeting, a Brazilian name was drawn for Supreme Bethel Honored Queen. What was even more special, is that, in this digital hybrid world, Leticia, from Rio de Janeiro, was present there to accept it. The excitement in the room was palpable as everyone realized the historic event they were witnessing!

*What year did you first become involved in Job's Daughters?* 2014

*What's your favorite station in Job's Daughters?* Honored Queen



*What is your term information?* Leticia's mascot is Aphrodite. Her motto is "Love is not seen with the eyes, but with the heart." Her colors to represent this term are yellow, orange and red.

*If it were up to you, where would you love to see Job's Daughters expand to next?* France

**JURISDICTION  
EARTH**



**DID YOU MAKE HISTORY IN YOUR  
JURISDICTION? LET'S CONNECT:  
JURISDICTIONEARTHEDITOR@GMAIL.COM**

## PAGE 7 - SEPTEMBER SPECIAL EDITION

*What game(s) do you and your family play the most often?* Leticía said her family doesn't play a lot of games; but they do watch football!

*One fun, unique fact about yourself:* As an older Daughter, Leticía was thrilled that being selected for SBHQ means that she will be an active Daughter for another year.

### FROM THE EDITORS

Welcome to Jurisdiction Earth! We are just beginning this new quarterly JDI newsletter, and one of the best ways to help us get started is to tell all your Job's Daughters friends about it!

In July we created the daily newsletter for Supreme Session, and we loved connecting with the Job's Daughters community near and far. We look forward to helping share news, stories, and memories from all over the world. We hope as we get Jurisdiction Earth up and running, it can sustain the enthusiasm from year to year!



**JURISDICTION  
EARTH**



LET'S CONNECT:  
[JURISDICTIONEARTHEDITOR@GMAIL.COM](mailto:jurisdictioneartheditor@gmail.com)



## PAGE 8 - SEPTEMBER SPECIAL EDITION



Not to sound selfish, but Jurisdiction Earth is for us. It's for you too! It's for everyone! We LOVE Job's Daughters, but our everyday lives don't include it because of where we live. We strive for connection with our international sisterhood and think you probably do too. So does your neighbor who you found out through coincidence was in Job's Daughters. So do a lot of women who have soared with the skills they gained in Job's Daughters and live beyond the states, jurisdictions and countries where Bethels currently exist.

We started joking that "Earth" was our jurisdiction at a Supreme Session a few years ago. As Majority Members attending on our own, (not as chaperones or with any official role) we have occasionally been greeted with an unintentionally less-than-friendly "who are you and why are you here?" Rachel, coming from Alaska, has been told "the Bethel in Alaska is closed." At the time Michelle was living in Iowa, occasionally working with a Bethel in Illinois, and about to move out of state again. And yes, we're from Kentucky, but Michelle is also from California, so....it gets a little complicated.

Job's Daughters may currently be in five countries; but its reach is truly across the ends of the Earth. Hence, Jurisdiction Earth.

Who are we?

*Continued on page 9*

**JURISDICTION  
EARTH**





## PAGE 9 - SEPTEMBER SPECIAL EDITION

Michelle Moode and Rachel Gearhart are both Majority Member PHQs, with mothers who were both in Job's Daughters too. We met in the small town of Paducah, Kentucky, just across a river from southern Illinois. Michelle was initiated in California's Downey Bethel no. 244 in 1992, and then moved to Kentucky with her family before beginning 8th grade. Rachel's mom (again, a MM herself) read about the newly opened Bethel no. 9 in the newspaper when Rachel was 14 and got her involved in 1996.

Sadly Bethel no. 9 closed after we reached Majority, but our little Bethel had a very good run with some amazing, dedicated adult volunteers and Daughters. We live 3,402.5 miles apart now, and neither of us live anywhere near a Bethel. Nonetheless, we are determined to remain involved and supportive.

### **MORE ABOUT RACHEL:**

*Rachel's background is in psychology and social work and she moved to Alaska in 2006. She got to work with Bethel no.1 in Anchorage, Alaska when she lived there, but has lived in Juneau for about 12 years. She works in the mental health field and spends a lot of time trying to say "no" to new volunteer opportunities. She loves rainbows, and her favorite station in Job's Daughters is Chaplain. A unique fact about Rachel is that she can tie shoelaces with her toes!?*

*Where would Rachel love to see Job's Daughters expand to next?  
"The United Kingdom; there's an estimated 350,000 Masons there."*

Continued on page 10



**JURISDICTION  
EARTH**



## PAGE 10 - SEPTEMBER SPECIAL EDITION

### MORE ABOUT MICHELLE:

Michelle has multiple degrees in art and is known for her printmaking and bookarts. She's moved around a lot, including living in California again as an adult, where she spent a couple years serving as Guardian Secretary and cool chaperone for Bethel no. 43, Los Angeles. Having had stops on the east coast and the Midwest since then, she's presently back in Murray, Kentucky, teaching at Murray State University and working full time for Ursula, who is 18 months old. Michelle's favorite Job's Daughters station is Guide, because she loved asking people to "Please follow me." A unique fact about Michelle is that she is very good at finding four-leaf clovers.

Where would Michelle love to see Job's Daughters expand to next?  
"The moon!"



**JURISDICTION**  
**EARTH**



# PAGE II - SEPTEMBER SPECIAL EDITION

## 2022-2023 CALENDAR OF SUPREME TEAM EVENTS (PARTIAL)

### *October*

1 - Montana, USA  
8-24 - Brazil  
29 - Illinois, USA (100th Anniversary  
& Reception for MIJD Natasha)

### *November*

5-6 - Utah, USA  
11-12 - Ohio, USA  
18-19 - Missouri, USA  
25-28 - Virginia, USA

### *December*

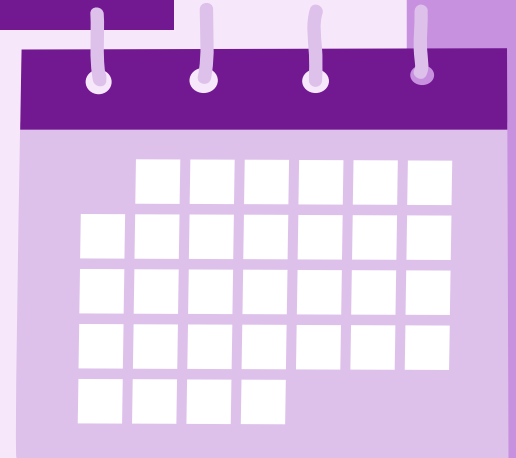
2-4 - DelMar, USA

### *January 2023*

6-7 - Pennsylvania, USA  
13-14 - New Mexico, USA  
20-22 - Arizona, USA  
24-25 - Oklahoma, USA  
27-28 - Kansas, USA

### *February 2023*

3-4 - British Columbia, Canada  
18-21 - Grand Master's Conference,  
Virginia, USA



## TRANSLATION STATION

ENGLISH	PORTUGUESE
Bethel	Bethel
Dais	Patamar
Guardian	Guardiã female Guardião male
Treasurer	Tesoureira female Tesoureiro male

**JURISDICTION**  
**EARTH**



DID YOU JOIN ON YOUR BIRTHDAY? TELL US  
YOUR UNIQUE STORY ABOUT YOUR INITIATION  
AT [JURISDICTIONEARTHEDITOR@GMAIL.COM](mailto:JURISDICTIONEARTHEDITOR@GMAIL.COM)



## PAGE 12 - SEPTEMBER SPECIAL EDITION

### Town Hall Talk with the Supreme Guardian & Chair of the BoT

The first Quarterly Town Halls of the year were held the last week of August. Supreme Guardian Maureen and I were joined by Grand Guardians, Associate Grand Guardians, Jurisdictional Guardians, Associate Jurisdictional Guardians, Supreme Deputies and Assisting Supreme Deputies.

After introductions, SG Maureen reviewed the fantastic initiatives for the 2022-2023 year:

- Step Up for Education Program
- JDI Pride Award
- Librarian's Competition
- Leadership Seminar

Updates from the Board of Trustees included a discussion of the rollout of our Communication Plan. Up next from the Board will be the continuation of our Strategic Planning sessions. The Strategic Planning sessions are an important step to building our next Strategic Plan for the Board of Trustees/Supreme Line. Strategic Planning sessions will be taking place between September through November.

Maureen and I were excited to discuss these plans with the Town Hall participants, and we can't wait for everyone to share these plans throughout their jurisdictions. We hope everyone is excited for a great year! And stay tuned for updates from our next Town Hall in November.

Building Sisters, Leaders & Friends,  
Melinda Kinders  
Chair, Board of Trustees

**JURISDICTION**  
**EARTH**

